

FOR LEASE: RESTAURANT/RETAIL/OFFICE

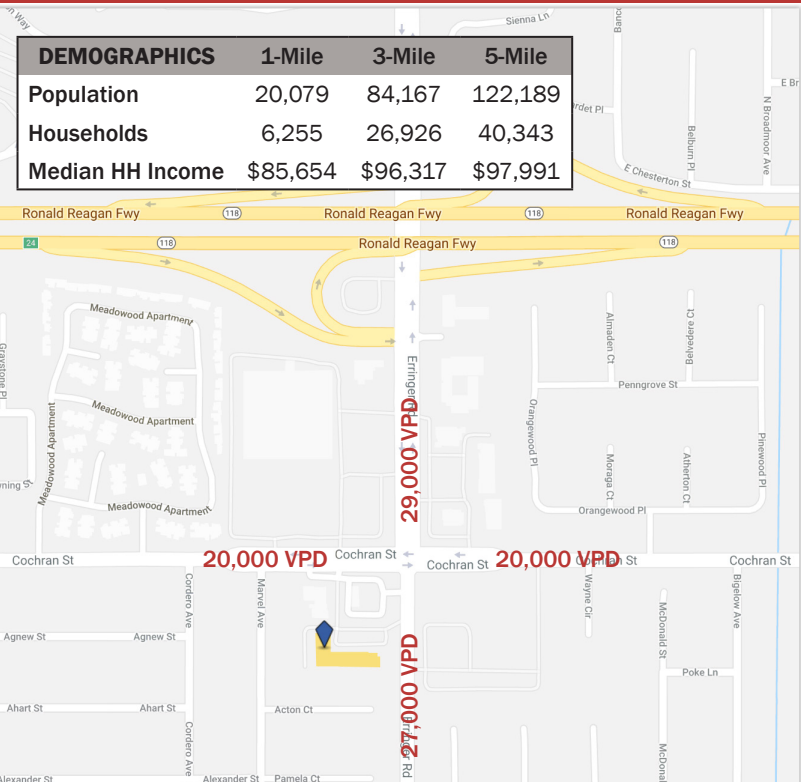
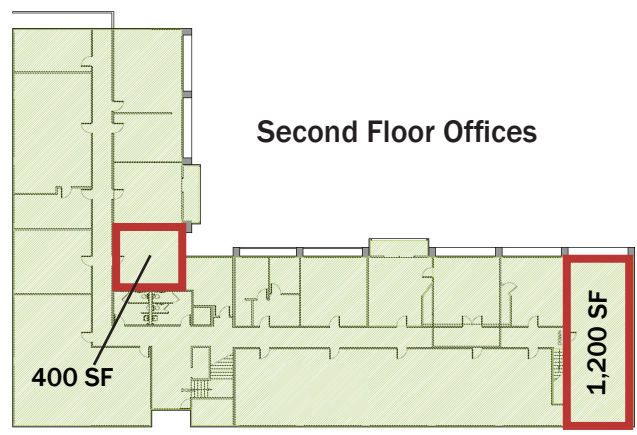


RESTAURANT / RETAIL / OFFICE
FOR LEASE
PCI Commercial Realty Group
805.500.4664
PAUL FORBAT ERIK PEDERSEN



Restaurant: 2,940 SF + Free Patio \$2.25/SF NNN
Retail: 840 SF (2 Units) \$1.65 - \$1.75/SF NNN
Office: 400 SF & 1,200 SF \$1.70/SF Mod. Gross

Valley Plaza • 2345 Erringer Road • Simi Valley, CA 93065



- Fully Fixtured Restaurant w/ Patio
- Small Retail Units Available
- Easy 118 Freeway Access

EXCLUSIVE AGENTS:
PAUL FORBAT **ERIK PEDERSEN**
(805) 328-6348 **(805) 501-7252**
paul@pcirealty.com erik@pcirealty.com
Lic. 01097663 Lic. 02073334

Disclaimer: Information contained herein is obtained from sources considered reliable but is not verified; the property owner and agent make no representation or warranty regarding its accuracy, express or implied. Prospective purchasers and lessees are responsible to conduct their own independent due diligence regarding the property and its suitability for their intended use, and are advised to consult with qualified professionals regarding tax, legal and other consequences of any transaction. All information is subject to errors, omissions, changes of price, terms or other conditions, prior sale, lease or financing, or withdrawal from the market without notice. All measurements are approximate. Logos are intended only to show the proximity of select businesses to the subject property, and do not imply endorsement. Offered for sale or lease exclusively by PCI Commercial Realty Group, Lic. 01888984.